



NORTH  
YORKSHIRE  
COUNCIL

1 April 2023

# HAS Climate update

Mike Rudd, Head of Housing, Technology & Sustainability

Victoria Turner, Public Health Consultant

# Context

- Climate change & sustainability is a recognised part of HAS work plan
- Identified leads for climate change for adult social care and public health since 2019
- Climate change key issue highlighted in 2019 HAS Summer Conversations
- Lots of work ongoing – in light of (draft) NYC climate strategy we are pulling all current and planned work together into HAS climate action plan
- Lots of crossover between climate and public health agendas – specific public health action plan to supplement HAS plan

# HAS climate action plan

- Adapted from the LGA Menu of Commitments for Local Authorities Climate Actions
- Plan includes series of commitments
  - What we will do, How we will do it, examples/case studies
- Four additional pieces to support implementation of the action plan
  1. HAS Climate Board
  2. Climate literacy training
  3. Development of service level plans
  4. Climate in all policy approach

What we will do	How we will do it	Examples/Case Studies
1. We will integrate climate change into our decision-making processes	<ul style="list-style-type: none"> <li>✓ By integrating climate change priorities and targets into all key projects, programmes, and strategies</li> <li>✓ By integrating climate change into impact and policy appraisal processes</li> <li>✓ By ensuring climate change is appropriately addressed within risk management and business continuity</li> <li>✓ By encouraging sustainable procurement activity</li> <li>✓ By ensuring Climate Change Impact Assessments are completed where we are creating new, making changes, or ceasing to provide services</li> </ul>	<p>A Climate Change Impact Assessment has been developed and beginning to be implemented. The Impact Assessment is to be used like existing equality impact assessments when we are creating new services, buildings or infrastructure or changing existing services, buildings, or infrastructure, or ceasing to provide services. The Climate Impact Assessment does not replace statutory environmental assessments where these are required. An initial screening tool is included to determine whether a full climate change impact assessment is required. <b>We will continue to ensure all services with HAS complete these.</b>  <a href="http://nycintranet/content/climate-change-impact-assessment">http://nycintranet/content/climate-change-impact-assessment</a></p> <p>Extra Care and Assistive Technology Procurement exercises contain specific elements on Climate Change through specifications and quality questions. This will form a template for future commissioning.</p> <p>We will ensure that all future procurement activity contains relevant Climate Change questions for consideration during the tendering process and in all commissioning activity and ensure this is a priority alongside value for money procurement.</p>

# Case study

- HAS Extra Care Development Framework

- The framework has been in place since 2016, in 2021 the provisions on sustainability were significantly enhanced to reflect this priority, this includes:

- Outlined Council's ambition for Net Zero to align our partners' vision with ours
- Requirement for Electric Vehicles charging points at all new schemes and support for retrofit at older schemes
- Ambition for workforce and supply chains to be as local as possible, including sourcing for ongoing needs such as food in restaurants
- Requirement for local materials both in sourcing and style (e.g. Yorkshire Stone at Whitby)
- Added evaluated tender questions on sustainable development, materials and practice, use of technology etc.
- Added environmental sustainability both in terms of build and whole life into the design standards
- New and existing schemes have moved to individual boilers which are more efficient than large plant boilers, along with on site renewables at Helmsley

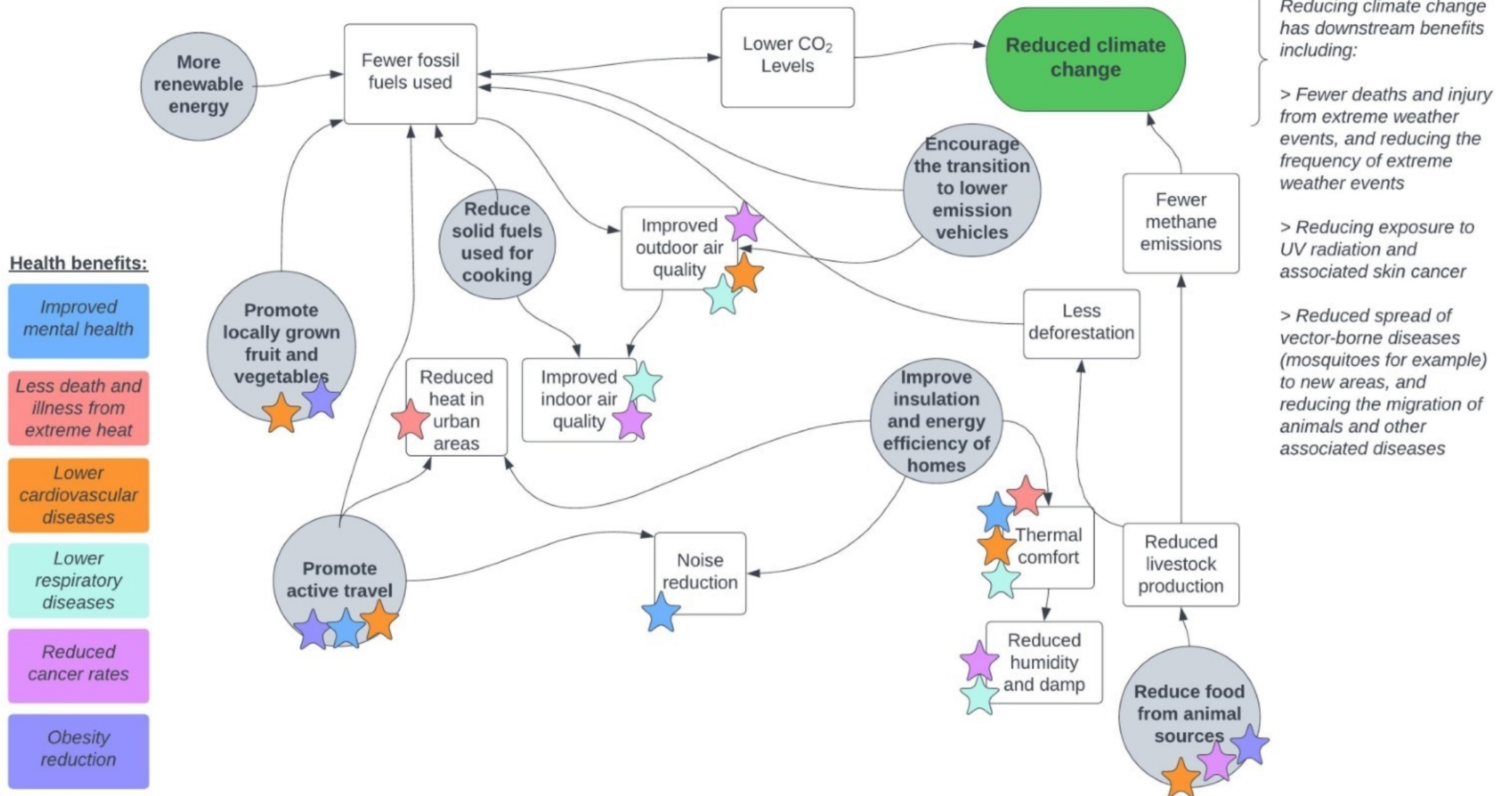
# Public health climate action plan

Sets out the actions we will take as a Public Health team to:

1. Develop the evidence base and data for the climate impact within North Yorkshire
2. Address the wide range of health impacts of climate change
3. Strengthen the climate resilience and environmental sustainability of the local health system, commissioned services, strategies, and interventions
4. Promote the health co-benefits of climate change mitigation in other areas

Overarching action	Specific details	Progress to date	Future Priorities
<p><b>Health Impacts from high temperatures</b></p> <p>•We will maintain robust seasonal health, extreme weather, and communications plans to highlight the health impacts from high temperatures and provide guidance and leadership around adaptations to improve health outcomes</p>	<p>1.We will continue to maintain, develop, and evolve our existing Seasonal Health Strategy, Extreme weather, and Communications plans</p>	<p>The Seasonal Health Strategy 2021-26 has been published which included for the first time a focus on heatwaves as well as cold weather.</p> <p>The public health team worked extensively during the high-heat periods of Summer 2022 to embed and create heatwave plans which has now been developed into the Extreme Weather Plan.</p> <p>We have also supported the Corporate Extreme Weather Plan development.</p>	<p>We will develop a multi-agency communications plan in coordination with Resilience and Emergencies, Business Continuity and The Local Resilience Forum.</p> <p>We will adapt the existing Seasonal Health Partnership group meetings to ensure that all weather is proportionately represented and ensure a severe weather sub-stream is developed.</p>

# Climate and health co-benefits



# Questions?

