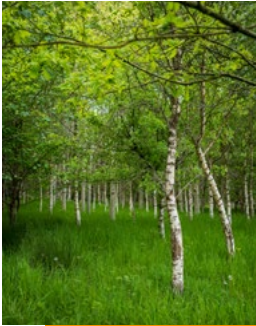


Our journey to a new hospital for Airedale

This booklet contains information about work being planned to prepare for building Airedale NHS Foundation Trust's brand new hospital and an invitation to have your say.



Get
involved

Contents

- 3 Introduction to our journey
- 4-5 Multi-storey car park
- 6 Access road
- 7 Electricity substation
- 8 Nursery
- 9 Caring for our environment
- 10 You said, we did
- 11 How to give your views

About this booklet

This booklet contains information about the work we're doing to prepare for building a new hospital for Airedale and an invitation for you to have your say.

It tells you about our plans for a multi-storey car park, new access road, electricity substation and nursery, as well as information about our commitment to creating a sustainable, environmentally friendly space.

Feedback from local people is central to how we have developed these plans. We look forward to continuing to work with you on our exciting journey to a new hospital.

Our journey

Airedale NHS Foundation Trust is on a journey to build a brand new hospital. This is driven by the urgent need to replace Airedale Hospital, which was built with Reinforced Autoclaved Aerated Concrete (RAAC).

We want to take this exciting opportunity to create a state-of-the-art, modern hospital that embraces the latest technology, supports integrated care, is environmentally friendly, and meets the growing healthcare needs of the people in our area.

This new hospital will take several years to complete and we are committed to involving our local patients, staff and local communities throughout the process.

Airedale NHS Foundation Trust serves over 200,000 people across areas within Yorkshire and Lancashire and provides a range of hospital and community-based services from Airedale Hospital and other local sites. Our journey to a new hospital will enable us to keep providing high quality services for the communities we serve.

Considerations

Building the new hospital will be complex and come with several challenges. We need to make sure services remain safe and effective during construction. The site itself is difficult to build on because of its steep slope and location near residential and conservation areas.

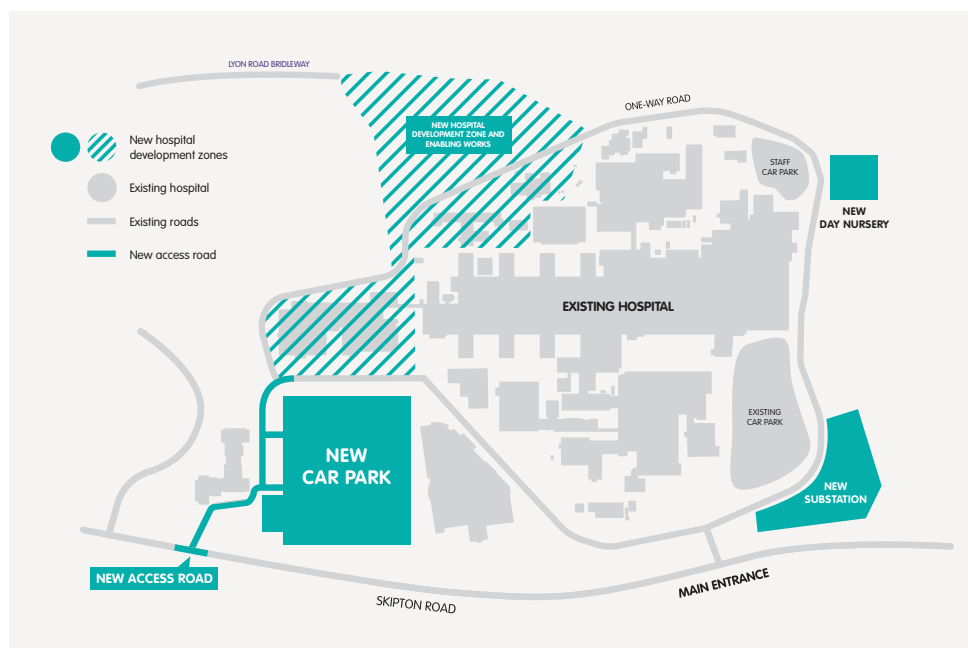
Preparing the site

Before we start building the new hospital, we have some preparation work to do. We have developed plans for building a new multi-storey car park, access road, and an electricity substation, for supporting the new hospital. We are also keen to hear views on the plans we're working up for moving the nursery to a new location on the hospital site.

Involving our local communities

We are asking for your feedback on these plans. Please share your views by completing our survey or attending one of the upcoming roadshows. Your input is vital as we continue shaping the plans for the new hospital and its supporting buildings and landscape. More information on how to get involved can be found on page 11 of this booklet.

The site



New multi-storey car park (MSCP)

The new car park will be built in the southwest corner of the site, where Car Park 3 is now. It will include:

 **1,258** extra wide parking spaces across 5 levels

 **94** accessible parking spaces and 48 family spaces

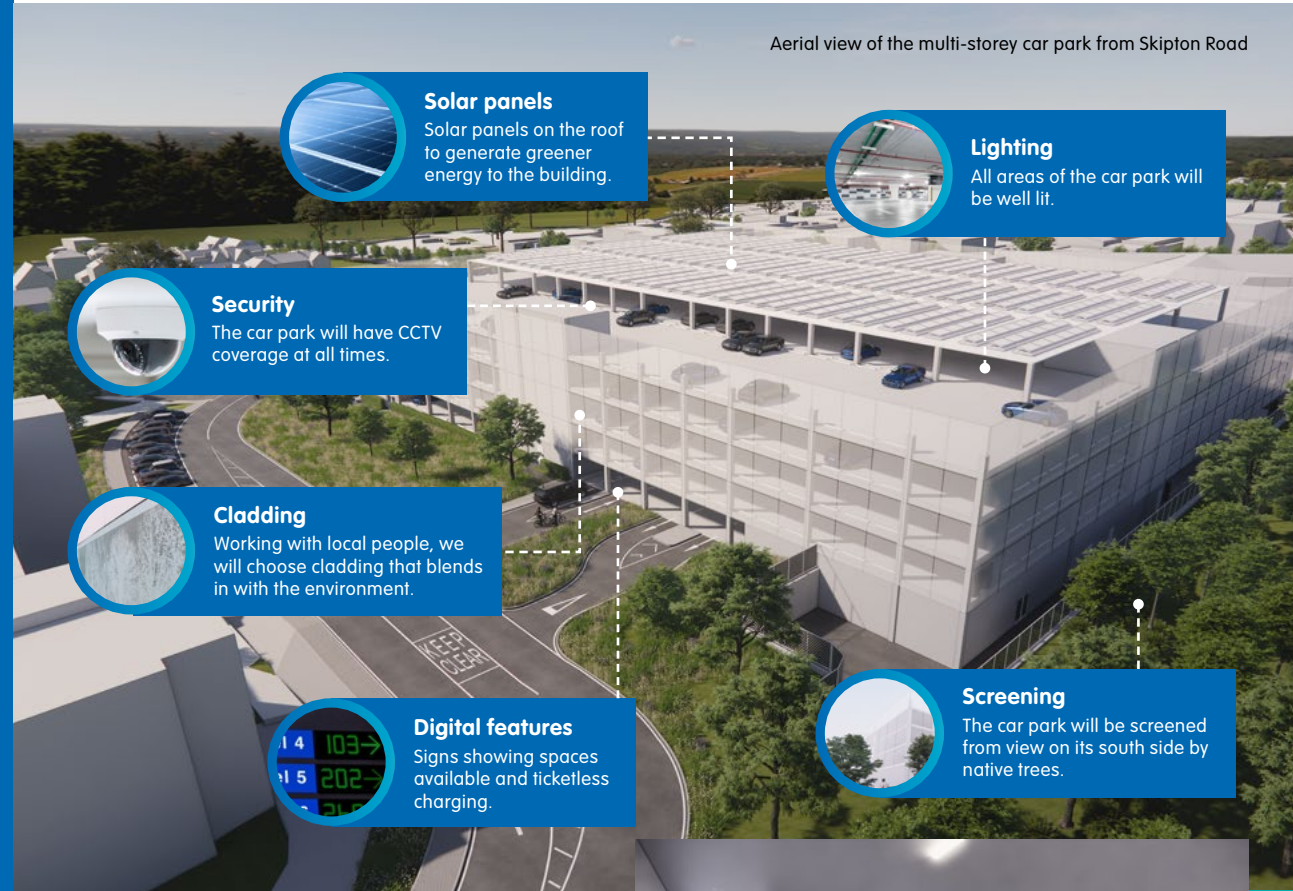
 **31** motorcycle spaces

 **116** bicycle spaces

- ✓ **Digital signs** showing available space
- ✓ **Lighting** All areas will be well lit
- ✓ **Security** CCTV coverage at all times
- ✓ **Toilets** Four standard toilets and two accessible toilets
- ✓ **An onsite office** for car park staff
- ✓ **Clear route marked for pedestrians** will be provided from the lifts
- ✓ **Two entrances and exits**, four stairways, four lifts (including two for evacuation)
- ✓ **Fast electric vehicle charging** points for both staff and visitors
- ✓ **Easy access** to and from the hospital
- ✓ **Pay machines** on the ground floor level towards the direction of the hospital



View of the multi-storey car park from Haxton Boulevard
The new area of trees and meadow will create screening.



Aerial view of the multi-storey car park from Skipton Road

Solar panels
Solar panels on the roof to generate greener energy to the building.

Lighting
All areas of the car park will be well lit.

Security
The car park will have CCTV coverage at all times.

Cladding
Working with local people, we will choose cladding that blends in with the environment.

Digital features
Signs showing spaces available and ticketless charging.

Screening
The car park will be screened from view on its south side by native trees.

Visual from inside the car park. Accessible parking bays to the ground floor and cycle parking spaces.



New access road

We are planning to build a new access road and footpath from Skipton Road. This will be near the new car park. The location is shown in the map on page 2.



The road will provide better traffic flow and access to the hospital site.



The new two-way road system around the hospital site will provide better site access and will improve traffic flow for hospital visitors.



There will be separate access for the public and a blue light route for the new hospital.



(Left) View from Skipton Road towards the new road and multi-storey car park. The new area of native woodland, trees, and meadow will soften these and create screening for residents.



(Right) Aerial view of the new access road from Skipton Road

New electricity substation

To provide sufficient power for the new hospital, we need to build a new electricity substation in the southeast corner of the hospital site. You can see its position in the map on page 2.



The substation will provide the new hospital with all the power it needs.



The substation equipment will be housed in single-storey buildings with landscaping around them to provide screening.



The buildings will be set into the slope near the main entrance to provide further screening and so that there is easy access for maintenance.



(Left) View of the substation from the access road showing the new native trees, hedgerow and scrub screening.



(Above) View of the substation from current P1 car park.



(Left) Image of substation from neighbouring houses. The change in levels and new screening will mean that a band of trees will be visible from behind the substation.

The nursery

We are in the early stage of developing plans to move the day nursery at the hospital to a new building. This is because the current nursery is in the area where the new hospital needs to be built. We are proposing to build the new nursery on the site of the staff car park in the northeast corner of the hospital site. You can see where it is planned in the map on page 2.

Once we have done some more work on our plans for the nursery and know more, we will share these plans with you. Look out for more information about this in early 2025.



View of P2 staff car park, the proposed site for the new day nursery.

Your views have helped shape our plans so far, and we need your feedback for this next stage.

Caring for the environment

Our landscape designers are working with an ecologist to create a sustainable space that is environmentally friendly and promotes biodiversity. This includes adding plants and features that make the area more environmentally friendly.

The new multi-storey car park will:



Have solar panels on the roof to generate greener energy to the building.



Be screened from view on its south side by native trees.



Cladding Working with local people, we will choose cladding that blends in with the environment.

On the site there will be:

Wildflower meadow

New native trees, hedgerow, scrub and a wildflower meadow will be planted on the perimeter of the temporary car parks and the electricity substation.

Woodlands

Existing tree planting with infill woodland planting will screen views from the public footpath to the north of the site. 5,000 new trees are being donated. We won't need all of those on site, and we will be asking local people for ideas on community spaces where some of these can be planted.

Wildlife habitats

We will create habitats for wildlife including insect hotels, bird boxes, bat boxes and hedgehog houses.

5,000
new trees



You said, we did

We are committed to being open and transparent and to involving local people throughout the various stages of building the new hospital.

Earlier this year, we asked local people for their thoughts on what is important for the new hospital car park. We listened closely and where planning and technical regulations allowed, we have included as many of the suggestions as possible.



Step-free access

Buildings and access designed to the latest accessibility standards.



Good lighting

All areas of the car park will be well lit.



Toilets

6 toilets at ground floor level, 2 of which are accessible.



Better access to and from the hospital site

with traffic controls to ease congestion.



Staff parking

There will be parking bays for staff.



CCTV coverage

The car park will have CCTV coverage at all times.



Digital signs

Showing available spaces and automatic number plate recognition.



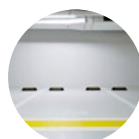
Paying on exit

People will pay for parking when exiting the car park.



Motorbikes/bicycles

31 motorbike spaces and 116 bicycle storage spaces.



Wider parking bays

Standard parking bays will be 5 metres long and 2.6 metres wide.



Multiple entrance and exit points

2 entrance points and 2 exit points.



Easy access to and from the hospital

Easy access routes from the car park to the hospital.

How to give your views

Complete the survey

The survey is available on the website www.airedale-trust.nhs.uk/about-us/securing-the-future-of-airedale/stage-two/.



If you would like a hard copy of the survey to fill out please email us at anhsft.YourNewHospital@nhs.net or call us on 01535 294013 or 07386 682 517.

Attend a roadshow

Roadshows are taking place across various venues:

Thursday 21 November	12 noon-8pm	Steeton Primary School	Market St, Steeton, Keighley BD20 6NN
Friday 22 November	9am-8pm	The Inn at Eastburn	36 Main Road, Eastburn BD20 7SN
Saturday 23 November	8.30am-1pm	The Hub in Steeton	Stone Grove, Steeton, Keighley BD20 6DE
Thursday 28 November	12 noon-8pm	Steeton Primary School	Market St, Steeton, Keighley BD20 6NN
Friday 29 November	9am-8pm	Steeton Primary School	Market St, Steeton, Keighley BD20 6NN
Saturday 30 November	8.30am-1pm	Steeton Primary School	Market St, Steeton, Keighley BD20 6NN

Find out more at the exhibition

You can also see the plans at an exhibition located at drop off and collection entrance 3, Zone C. This entrance is just to the west of the Outpatients entrance (drop off and collection entrance 2). **The exhibition will run from Monday 18 November to Friday 13 December.** Staff will be available to answer questions each Wednesday at the exhibition. If you can't attend there are lots of other ways to find out more and share your thoughts:

Download the app

Stay connected by downloading our app. Access updates, view designs, and provide feedback at your convenience.



Visit the website

www.airedale-trust.nhs.uk/about-us/securing-the-future-of-airedale/stage-two/

Email: anhsft.YourNewHospital@nhs.net

Language and formats

If you would like a copy of this booklet in a different language, easy read or a different format, please email anhsft.YourNewHospital@nhs.net or call 01535 294013 or 07386 682 517. Our accessible text relay service number is 18001 01535 294013.

Published: November 2024

Airedale NHS Foundation Trust
Airedale General Hospital
Skipton Road
Steeton
Keighley
West Yorkshire
BD20 6TD

www.airedale-trust.nhs.uk

The journey to our new hospital

