

CIL & S106

Thirsk and Malton Area Committee

Accessing S106

Parks and Open Space
Contributions managed by Parks and
Grounds Team

Parish & Town councils notified of
S106 available each year

Contact

Commuteds@northyorks.gov.uk

- **Neighbourhood CIL**

- 15-25% of all CIL come is passed to the local parish
- This is to be spent on local infrastructure projects

- **Strategic CIL**

- 70-80% of CIL income
- Spent on strategic projects within the legacy district area it was collected



Accessing CIL



Infrastructure Business Plan

- Adopt an assessment process to take each project through.
- Review of Infrastructure Delivery Plans.
- CIL forecasting/cash flow.
- Consider project delivery time scales.

Infrastructure Prioritisation Categories

Category	Definition
Critical	Infrastructure that must happen to enable growth.
Necessary	Infrastructure necessary to mitigate impacts arising from the operation of development. This will include projects identified within the IDP's to enable the delivery of allocations.
Policy High Priority	Infrastructure required to support wider strategic or site-specific objectives linked to the existing (or emerging) Local Plan.
Desirable	Infrastructure that supports sustainable growth.

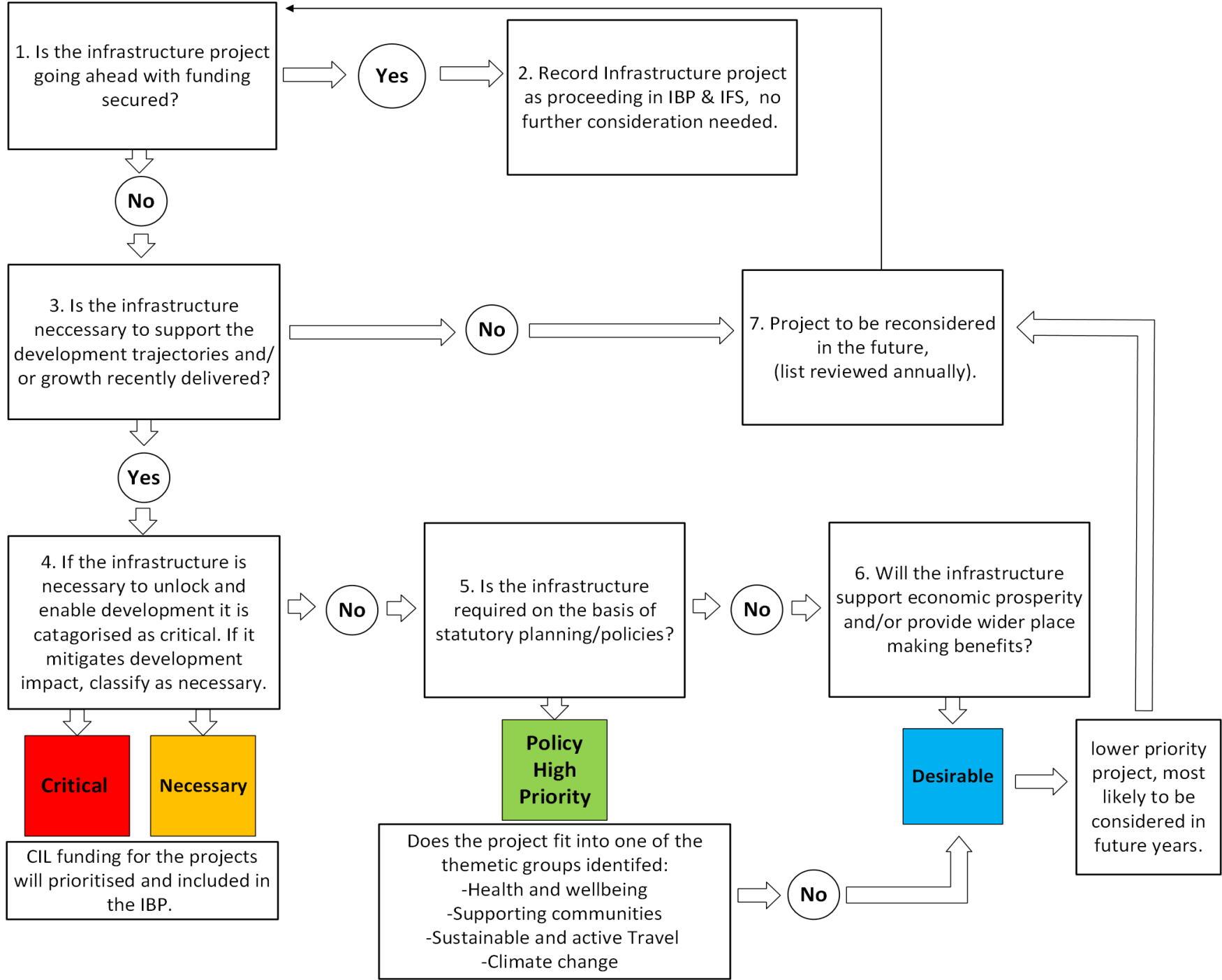
2nd stage Assessment

Health and wellbeing - this includes creating environments that support and encourage healthy lifestyles and supports healthcare.

Supporting communities – framework of institutions and physical spaces that support civic life, also refer to as social infrastructure.

Sustainable and active travel - promoting development that encourages modes of travel that involve a level of activity.

Climate infrastructure – development that is climate resilient, sustainable and looks to mitigate against climate change.



1. Is the infrastructure project going ahead with funding secured?

Yes

2. Record Infrastructure project as proceeding in IBP & IFS, no further consideration needed.

No

3. Is the infrastructure necessary to support the development trajectories and/or growth recently delivered?

No

7. Project to be reconsidered in the future, (list reviewed annually).

Yes

4. If the infrastructure is necessary to unlock and enable development it is categorised as critical. If it mitigates development impact, classify as necessary.

No

5. Is the infrastructure required on the basis of statutory planning/policies?

No

6. Will the infrastructure support economic prosperity and/or provide wider place making benefits?

Critical

Necessary

Policy High Priority

Desirable

CIL funding for the projects will prioritised and included in the IBP.

Does the project fit into one of the thematic groups identified:
-Health and wellbeing
-Supporting communities
-Sustainable and active Travel
-Climate change

No

lower priority project, most likely to be considered in future years.

Questions?
