

Tina Hustler
Nawton Parish Council Clerk

CC: Christopher Clarke, Nawton PC
CC: Sandra Thurlow, Beadlam PC

Henry Cumbers
Senior Planning Policy and Place Officer
North Yorkshire Council
Planning Policy and Delivery

29 October 2025

Dear Henry,

Re: Application to become a designated Neighbourhood Area in order to produce a Neighbourhood Development Plan – Beadlam and Nawton parishes

I am writing to you on behalf of the parish councils of Beadlam and Nawton following your discussions with Christopher Clarke regarding the production of a Neighbourhood Development Plan (the “**Plan**”). In order for the parishes to produce a Neighbourhood Development Plan under The Localism Act (2011), we understand that we must first apply for the parishes to become a designated Neighbourhood Area.

1. Introduction / Background:

The two parishes of Beadlam and Nawton are adjacent villages running linearly along the A170 with northern and southern projections along dale lanes and into outlying farmland. The parishes sit at the juncture of the Howardian Hills area of outstanding natural beauty (AONB) and the North York Moors National Park (NYMNP). The area, part of the ‘Fringe of the Moors’, is one of high landscape value (AHLV) characterised by the rise of limestone and calcareous grit hills, the Tabular Hills, to the moors above with characteristic small settlements and both wooded dales and open farmland.

Beadlam Parish

The parish of Beadlam (Bodlum in the Domesday Book) comprises the village of Beadlam and surrounding agricultural area. It lies adjacent to Nawton, straddling the A170 road. Agriculture, primarily in the northern area of the parish, continues to have a significant influence on the village and its setting. The majority of the village is situated north of the A170 with a varied selection of homes ranging from thatch cruck cottages, stone built village and farm houses with slate or clay pantile roofing and more recent development including council built cul-de-sacs and modern bungalows. Most of the population of 197¹ lives in the village, which contains a church - St Hilda's and a retirement home. On the edge of the village there is a caravan site and a secondary

¹ Population of 197 comprising 103 households per. 2021 Census Data extracted from Nomis

school, which serves the Ryedale area. People mainly work locally within a 20-mile radius. Retired people make up approximately 40% of the population.

Nawton Parish

The parish of Nawton (Nagletune in the Domesday Book) lies in the district of Ryedale, North Yorkshire, astride the A170 road on the southern boundary of the North York Moors National Park and equidistant between the market towns of Helmsley and Kirkbymoorside. It comprises a central, largely residential area and a wide outlying agricultural area. The properties in the village comprise of stone built village and farm houses with slate or clay pantile roofing and more recent developments including brick and stone faced houses. The central section of the village, primarily to the north of the A170 includes a Conservation Area and to the south there is a Visually Important Undeveloped Area. Facilities in the village include a primary school, recreation field and public house. Again, a large majority of people work locally and within a 20 mile radius. There are a significant number of retired people within the population of 571² - approximately 25%.

Although the history of the parishes is inextricably linked and they share a number of key services, the villages are separated physically by key open spaces to both the north and south which form an important part of their character.

Appropriately for 'Fringe of the Moors' settlements, the parishes straddle both the North York Moors National Park Authority's and the North Yorkshire Council's planning boundaries (as illustrated by the darker green shaded area in the map included below). Approximately half of the area of the proposed Neighbourhood Area lies within the National Park which means it has the highest status of protection in relation to landscape and scenic beauty with statutory purposes to conserve and enhance the natural beauty and promote understanding and enjoyment of the North York Moors.

2. Statement of Intent:

The vision for the formation and adoption of the Plan (and potential neighbourhood plan design code / village design statement) for Beadlam and Nawton is to enable the local community through their two parish councils to determine priorities for and shape the development and growth of their local area in line with national policy frameworks and the relevant local plans and policy frameworks. The Plan will support the community in its desire to address local social, economic and environmental issues and in the creation of housing, business and community facilities, designated green space and required infrastructure so that the two parishes remain a vibrant and thriving joint community in which its residents can live and work.

The proposed Neighbourhood Area represents the joint parish boundaries and reflects the essential character of the two villages as a 'Fringe of the Moors' settlement with both small villages and outlying rural houses and farmsteads. The parish councils and local residents consulted to date feel that no residents of the parishes should be excluded from the opportunity to shape the Plan or the enjoyment of the benefits to the

² Population of 571 comprising 291 households per. 2021 Census Data extracted from Nomis

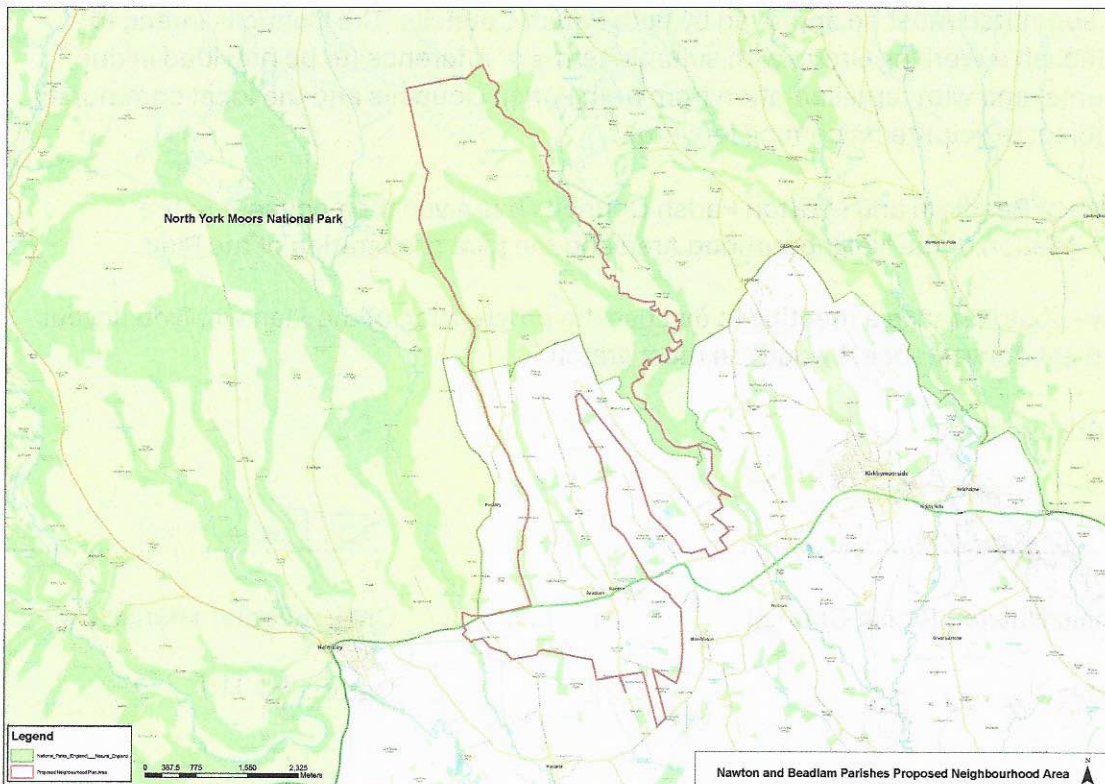
parishes from the creation and implementation of the Plan. Further, the parish councils consider that the joint boundary is appropriate to be designated as a Neighbourhood Area because it has meaningful and clear boundaries, reflects the existing local sense of community and is generally recognised as an existing discrete area.

We will seek to develop a Plan based on the following points or others that are identified through our consultation and plan-making processes and community engagement:

- Development of the Plan will recognise and include the views, ambitions and needs of the local community across the designated Neighbourhood Area.
- The Plan will inform, guide and promote balanced and sustainable future development by way of evolution of settlements within the neighbourhood area on a scale appropriate to the relevant settlement and surrounding landscape.
- The Plan will seek to preserve and protect the historic, physical and natural heritage and character of the parishes, ensuring that the envisioned evolution will safeguard these attributes and have full regard to them whilst supporting proportionate and appropriate development in line with national policy and strategic policies for the local area.
- The Plan will seek to impose on those undertaking any development the inclusion of any necessary improvements in infrastructure, directly or otherwise, in line with national and applicable local policy.

3. Name of proposed Neighbourhood Area: Beadlam and Nawton

4. Map of proposed area: see below



5. Contacts:

Please see below contact details in relation to this application for designation:

Title: Nawton Parish Council Clerk
First name: Tina
Surname: Hustler
Email: clerk@nawtonparishcouncil.gov.uk

Title: Nawton Parish Councillor
First name: Christopher
Surname: Clarke
Email: clarke.christopherj@googlemail.com

6. Declaration:

In accordance with Section 61G of the Town and Country Planning Act 1990 it is confirmed that the bodies making this application are Nawton Parish Council and Beadlam Parish Council, each established in pursuance of the Local Government Act 1972, and therefore a relevant body.

The Parish Councils will jointly oversee the Plan preparation with the intention of submitting the completed Plan to the Local Planning Authority (as lead Authority) and the North York Moors National Park Authority for their acceptance and then approval by the electorate. Each Parish Council will approve any draft plan to be submitted independently through their usual decision making processes / powers and any plan to be submitted must be approved by both Parish Councils. The Councils intend to establish a Working Group with suitable terms of reference (to be provided in due course) and with representation from both Parish Councils and the local community (subject to volunteers coming forward).

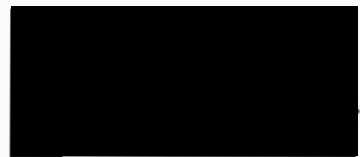
Each of Beadlam and Nawton Parish Councils has given their consent to the designation of the Neighbourhood Area and the joint preparation of the Plan.

If we could arrange a meeting to discuss the progression of the Plan with you at your earliest convenience, I would be most grateful.

Yours sincerely,


.....
Chair, Nawton Parish Council

Date: 4.11.25


.....

Chair, Beadlam Parish Council

Date: 4/11/25